

The Business Data Science Canvas

A journey into the creation of Data Science projects through the arising questions of human and AI interactions.

Benedikt Ramsauer

EPFL Mathematician/Data Scientist & Cofounder @swiss-sdi



AI in swiss companies

- Multiple companies in switzerland
 - Industry
 - Energy
 - Transportation
- Meeting with
 - CEOs
 - R&D managers
 - Field experts
- Our role is to
 - Advise
 - Design
 - Lead data science projects



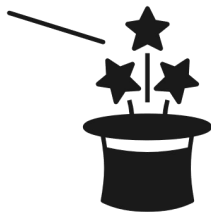
AI in swiss companies

We have observed a **misconception** on what AI

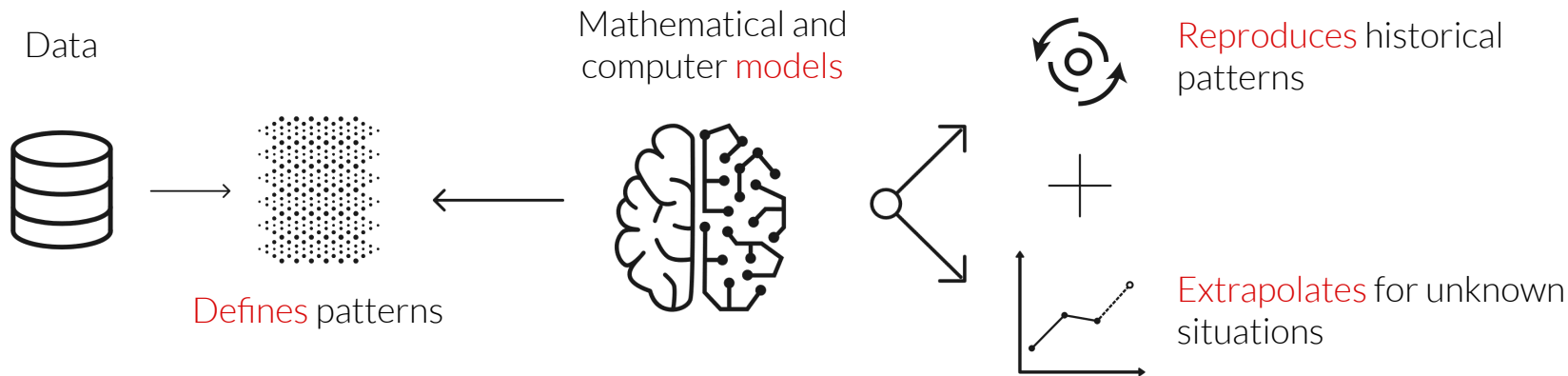
- represents
- can really do.

But most of all we have to explain that

AI is **not magical**



AI is only mechanics



Strengths

- Find **complex and specific** patterns
- **Efficient** to produce results
- Allows a certain degree of **generalization**

Weaknesses

- Designed for a **unique task**
- Highly depends on the **input data**
- Extrapolation and decision **explanation can be a complex task**

Our analysis

Requirements

- A **tool to structure the creation** of Data Science Projects
- A medium that is **understood by the decision-makers**
- **A bridge** between the technical and the business teams

Our solution

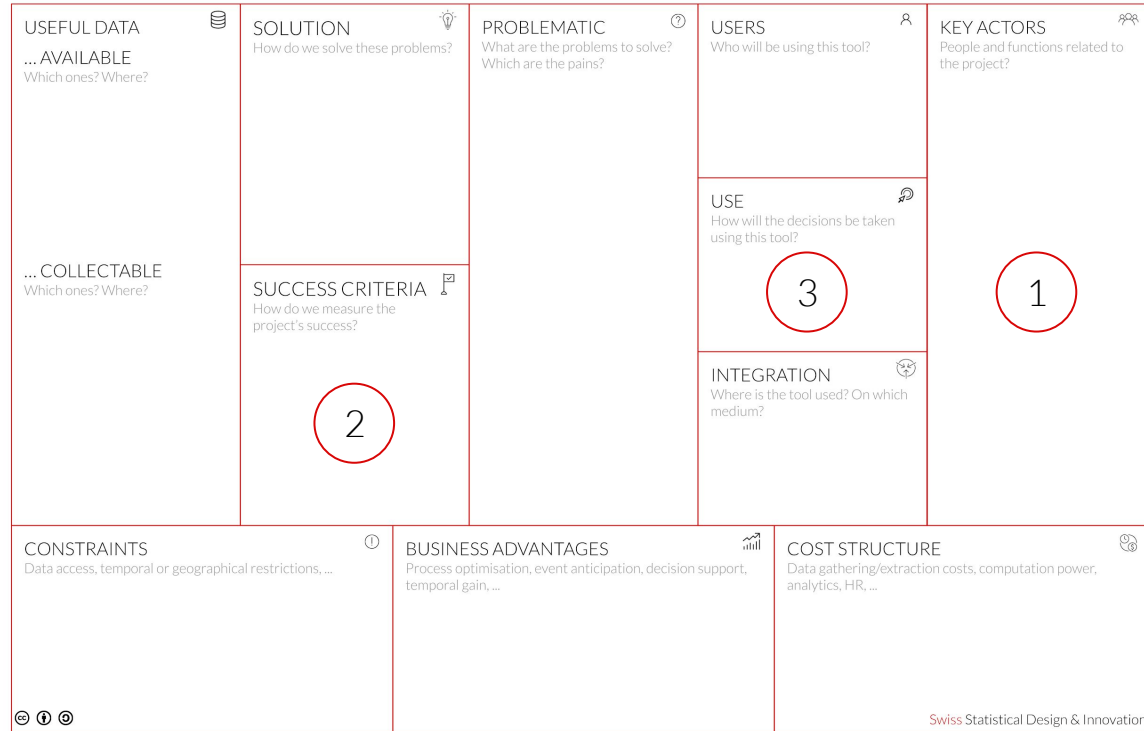
- The Business Data Science Canvas



The Business Data Science Canvas

The Business Data Science Canvas (v1.1)

Title:



Licensed under a Creative Commons Attribution-ShareAlike 4.0 International License.

This work is inspired by the Business model canvas of Osterwalder, Pigneur & al

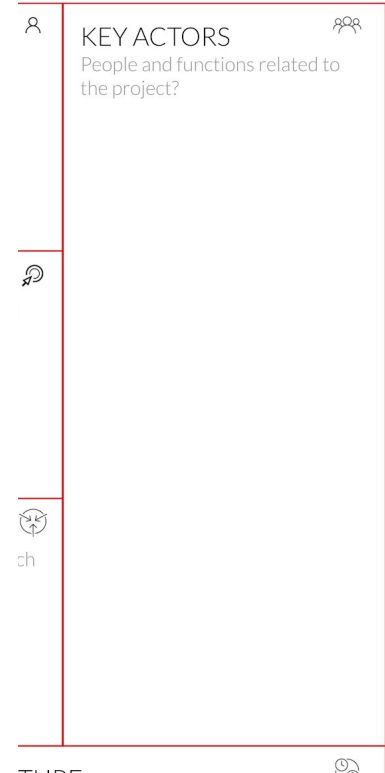
Focus on

1. **Key Actors**
Will AI help us to be more human at the workplace?
2. **Success Criteria**
What is AI's goal and what type of critical thinking skills do we need?
3. **Users, Use & Integration**
How can we think about the human & AI interaction at the workplace?

AI as the result of heterogeneous teamwork

Key Actors - Will AI help us to be more human at the workplace?

- Data science projects are by essence the result of a gathering of **various point of views**
 - Data Scientists
 - Field experts
 - Business team
 - IT department
- AI development **strengthens** human to human interactions. It requires:
 - **communication** between various sectors
 - **unification** of the needs



AI as an optimization problem

Success criteria - What is AI's goal and what type of critical thinking skills do we need?

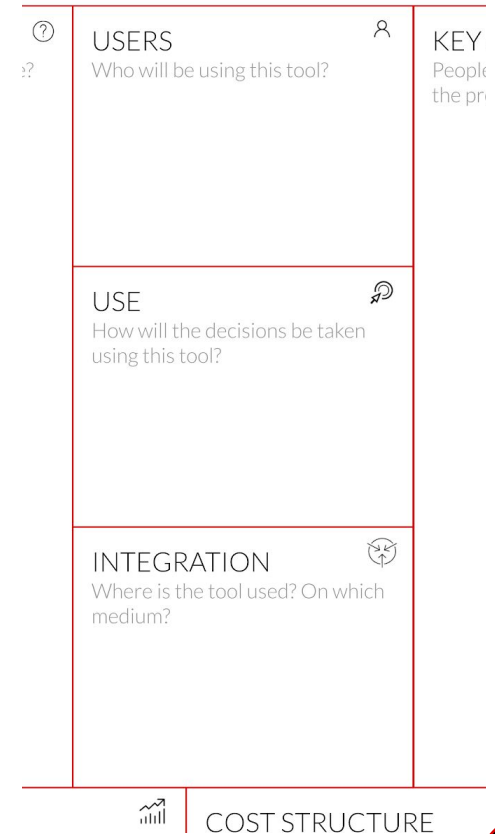
- **Interface** between technic and business needs formulation
- **Mathematical representation** of business requirements
- AI model has only **one goal**
- Highly depends on input data
- Still need to be critical on the provided result



Human interaction with the AI tool

Users, Use & Integration - How can we think about the human & AI interaction at the workplace?

- **Use** of a given AI tool differs depending on the **context** and the **user**
- Predictive maintenance example
 - Customer service VS machine operator
- Degree of **knowledge on the decision process** also varies



AI feedback for better interactions

We have to develop tools that allow users

- to interact with the AI
- to get answers on how it works.
- This a new topic that needs to be developed.
- Tomorrow: AI & Trust Track
- Lea Strohm from Ethix will talk about Algorithmic Bias and the related ethical questions

ethix





Take home message

- AI is not magic. It is **a tool**
- The **BDSC helps** to englobe all aspects of AI projects during the design process
- **Human and AI interaction** is a core element for successful AI projects

Contact

Benedikt Ramsauer

Data Scientist & Cofounder @swiss-sdi

b.ramsauer@swiss-sdi.ch | + 41 78 824 79 89

Swiss Statistical Design & Innovation Sàrl

Grand-Rue 96A

CH - 1627 Vaulruz

swiss-sdi.ch

