

AM|DEPFL

AI & Machine Learning on the Edge

January 29, 2020 — 1:30-5:10 pm



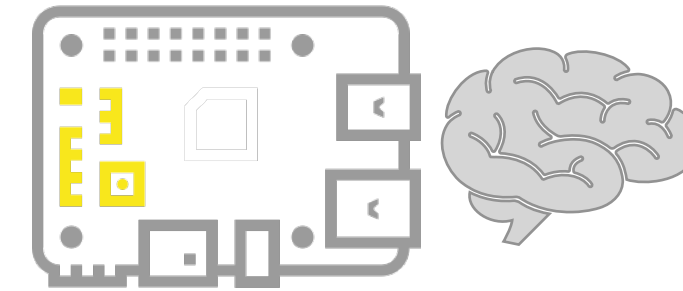
Alice Coucke
Head of Machine Learning Research

SONOS

AI & Machine Learning on the Edge

75B
connected devices
by 2025*

Hardware



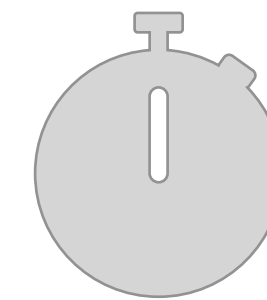
Privacy



Reliability



Latency

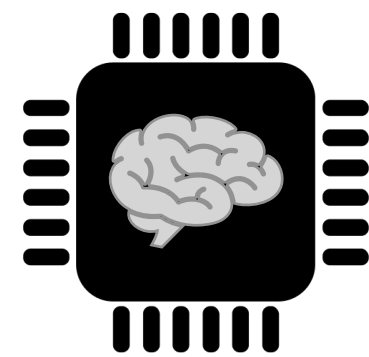


AI & Machine Learning on the Edge

?

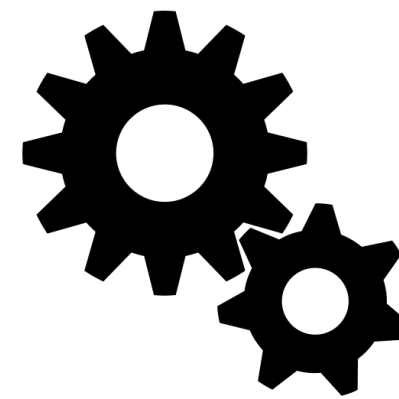
Hardware-accelerated AI

How to run deep neural networks on smaller and smarter processing units?



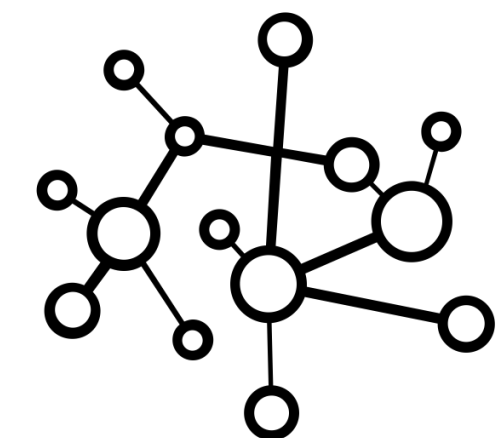
Embedded machine learning

What optimizations for machine learning inference on the edge?



Edge intelligence

How to benefit from a decentralized setting?



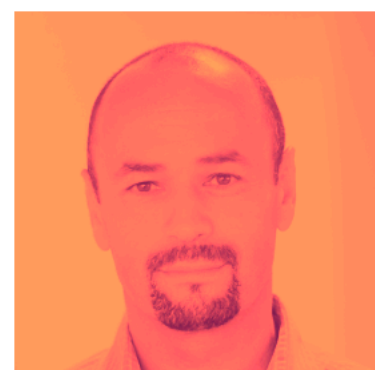
AI & Machine Learning on the Edge

Hardware-accelerated AI

1:40 — 2:25 pm



Frédéric Pétrot
INP/Ensimag



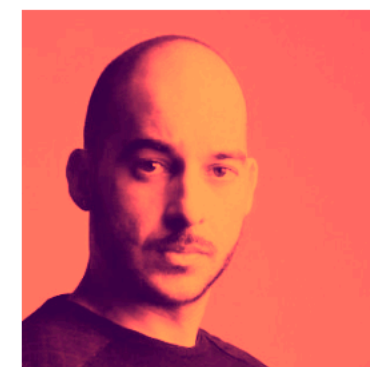
Abdel Younes & Gaurav Arora
Synaptics

Embedded machine learning

2:25 — 4:00 pm



Andrey Ignatov
ETH Zürich



Francesco Caltagirone
Sonos



Brandon Reagen
Facebook AI

Edge intelligence

4:00 — 5:10 pm



Anastasia Koloskova
EPFL



Aurélien Bellet
INRIA



Camille Marini
Owkin