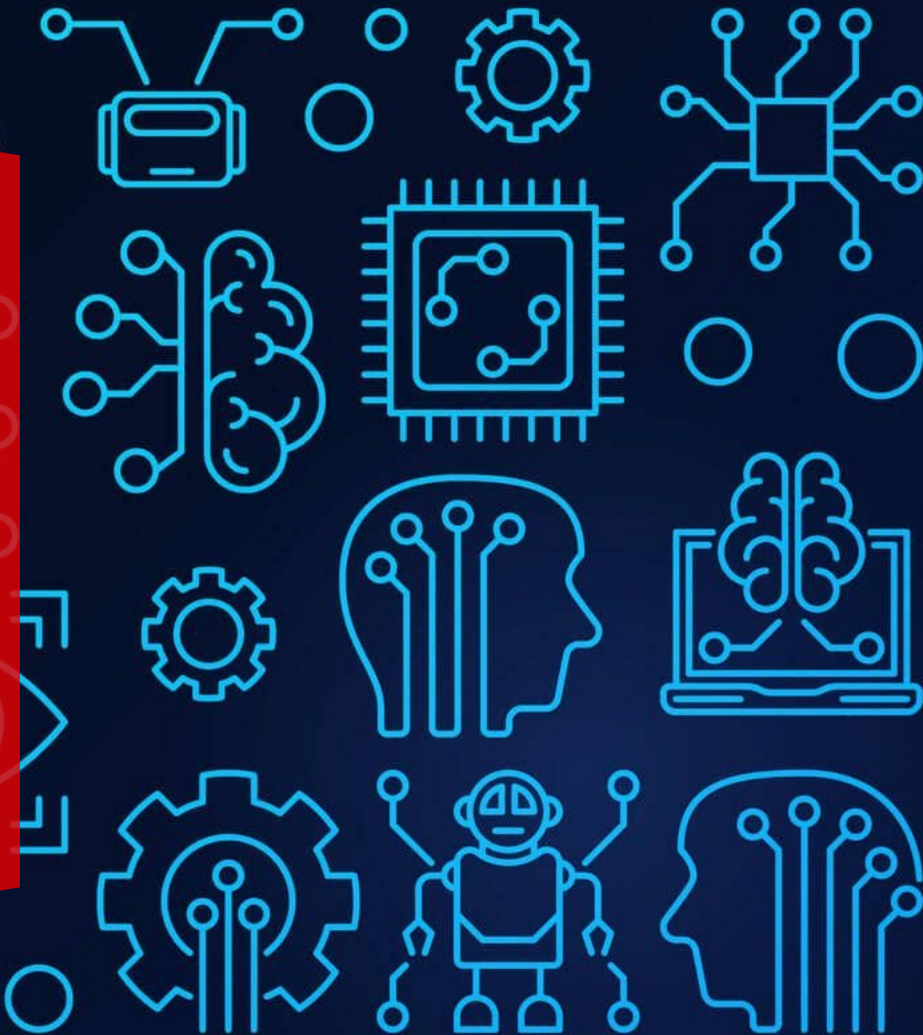


# SBB Mobile Machine Learning

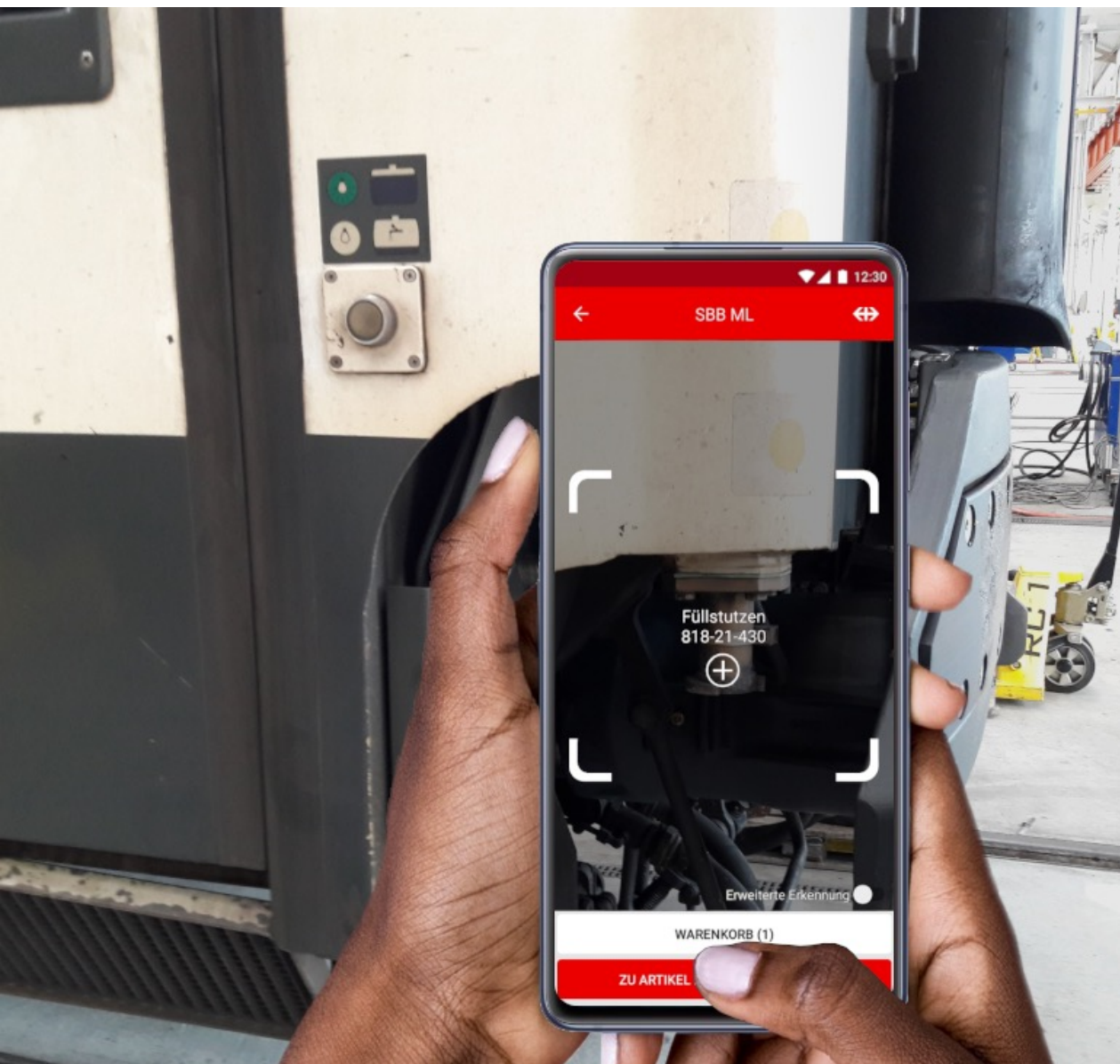
Henrik Karppinen  
SBB AppBakery  
Lausanne, 30.03.2022





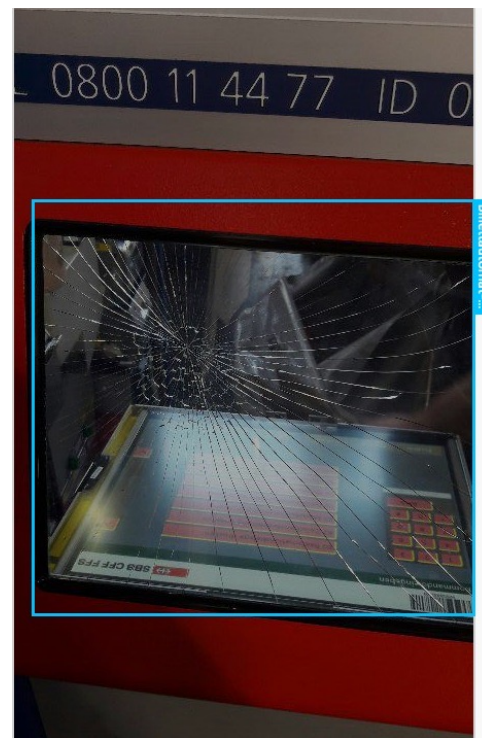
## Optimize work at SBB garage

Automated ordering of train spare parts at SBB garage.





# SBB Repair and Clean



Report easily if something is broken or dirty.



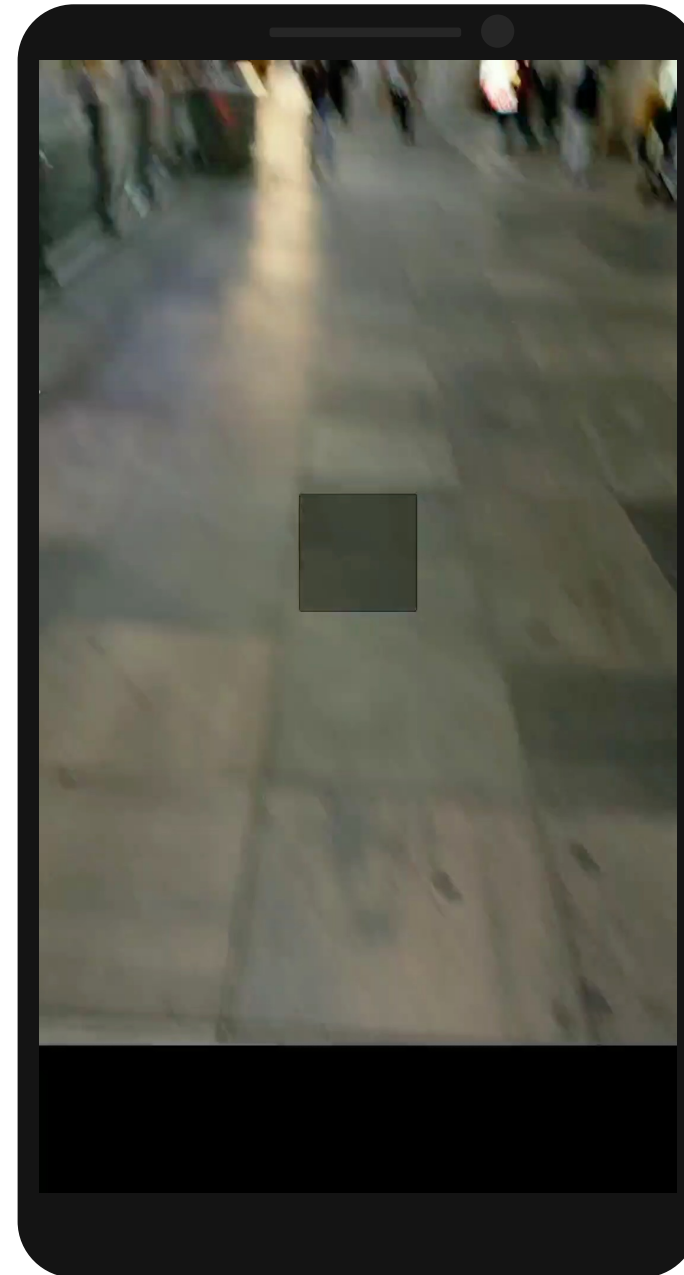
## Station Maintenance

Device ids are used to access digital twin data.

Station has a 3D Building Information Model containing all the station devices.

The app links physical devices to their digital twins.

Physical device id labels are no longer needed.





## SBB Inclusive App

The app helps blind and visually impaired people to travel.

New feature: tell user what is around and distance to the objects.

AI helps to locate the train doors and find door opening mechanism.