



DEEP demo

Newly Released NLP Features



Ximena Contla (DEEP, Product Manager)

Aditya Khatri (DEEP, Senior Developer Toggle Corp)

theDEEP.io

29 March

DEEP BOARD MEMBERS:



DEEP IMPLEMENTING PARTNERS:



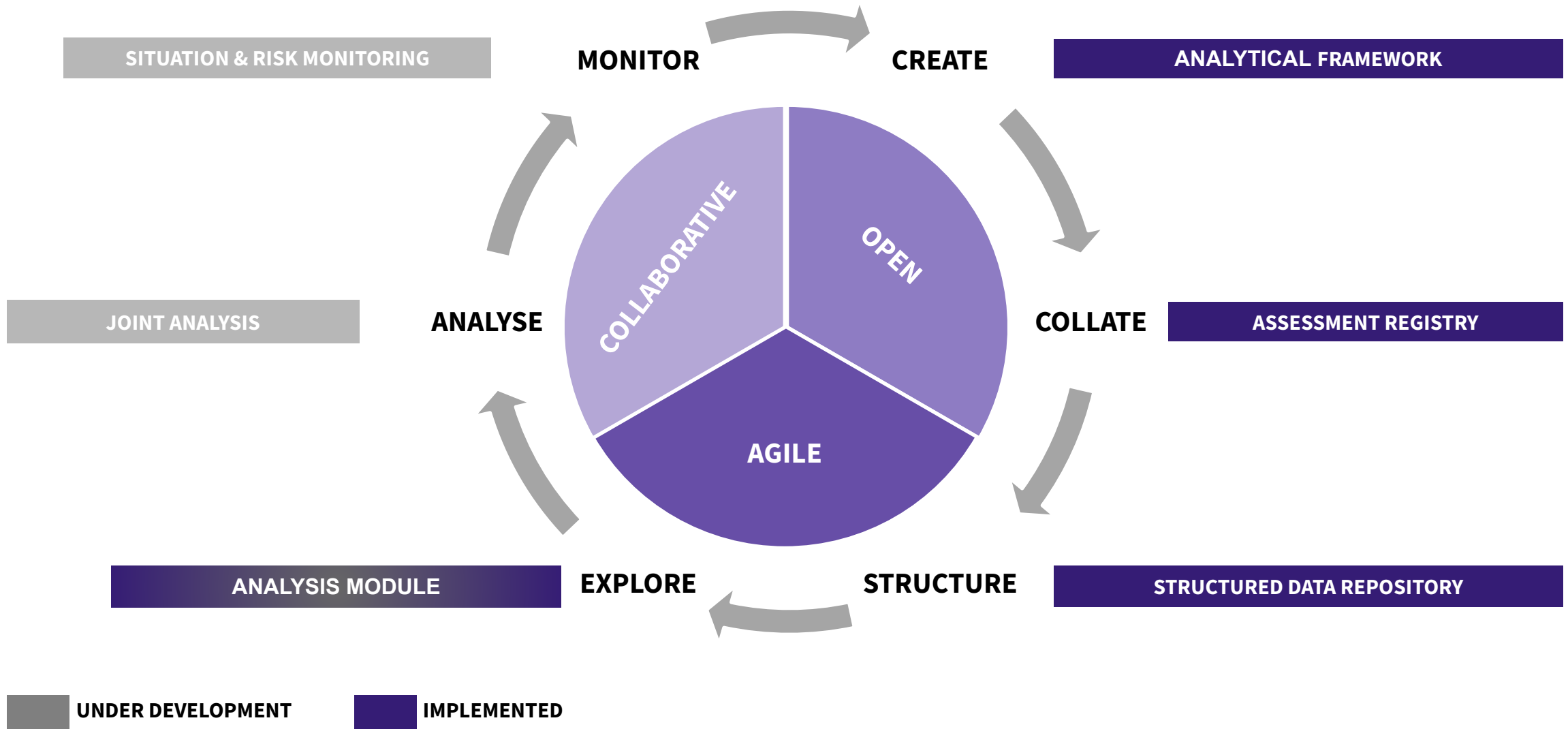
Data Entry & Exploration Platform (DEEP)

Joint open source initiative

- Online platform to **support delivery of timely and credible situational and risk analysis** of crises and contexts.
- Suite of **sense making tools and collaborative workflows** for both structured and unstructured data.

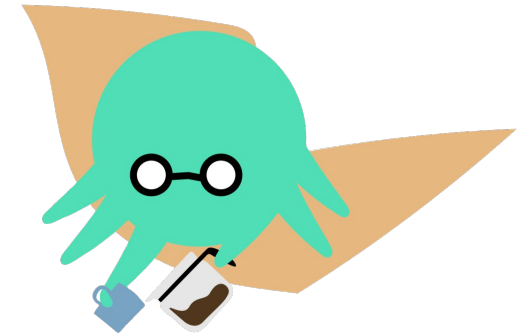


Principles & Analysis Flow



DEEP in Numbers

- ~ **300** Active Projects in **61** Countries
- ~ **4,000** Registered Users
- > **50,000** Sources
- > **400,000** Entries



Some case studies

- IFRC on Secondary data review for Yemen
- DRC on DEEP as a platform to support collaborative protection analysis
- iMMAP on Utilizing DEEP to guide primary data collection
- OCHA for Secondary Data analysis of the Ukraine response.
Research and Academia: “Humanitarian severity and information gap measures using Possibility Theory”





Welcome to DEEP!

A COLLABORATIVE ANALYSIS PLATFORM
FOR EFFECTIVE AID RESPONSE

Curious about the platform?

[Explore DEEP](#)

LOGIN

New to DEEP? [Register](#)



[Forgot your password?](#) >

[LOGIN](#)

[LOGIN WITH HID](#)

[Terms and Privacy](#)



SUMMARY OF MY PROJECTS

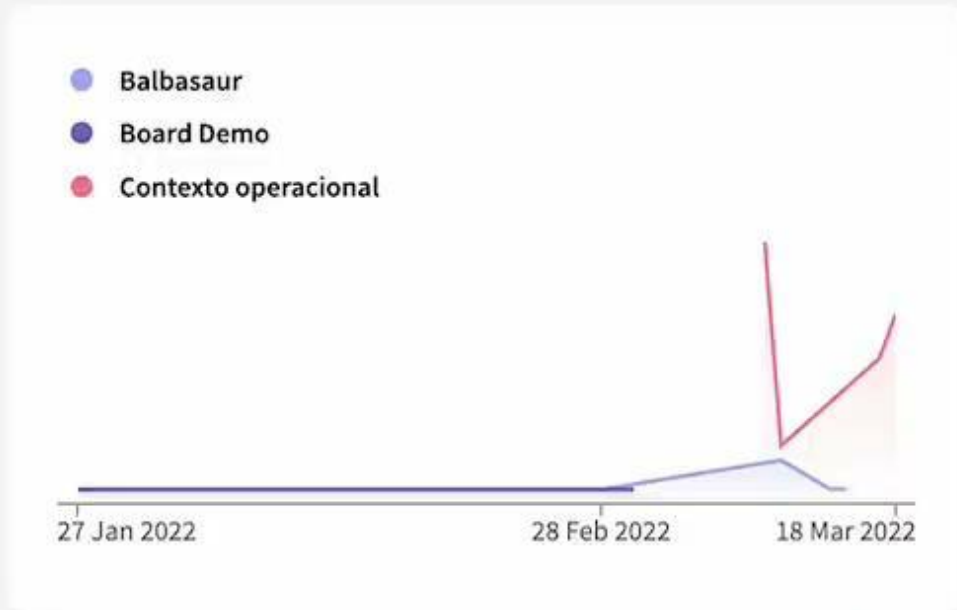
5
Projects

942
Total added sources

8%
Sources tagged

0%
Sources tagged & validated

PROJECTS TAGGING ACTIVITY LAST 3 MONTHS



MY ASSIGNMENTS

- Ximena Contla assigned you to source **Community Perception Report - October 2021 heavy rains_0.pdf** in Project 1. 10:25 AM, Mar 21, 2022
- Ximena Contla assigned you to source **Rights violation of women, children worrisome** in Project 1.

RECENT ACTIVITY

- AM** Andrés Felipe Martínez added a source on **Contexto operacional**. 02:55 PM, Mar 24, 2022
- AM** Andrés Felipe Martínez added a source on **Contexto operacional**. 02:35 PM, Mar 24, 2022
- AM** Andrés Felipe Martínez added a source on **Contexto operacional**.

RECENT PROJECTS

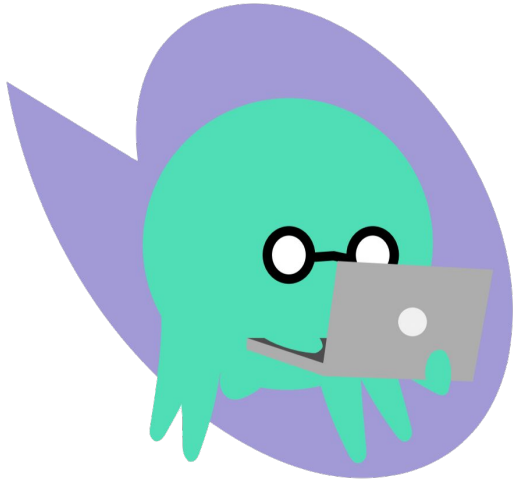
[SET UP A NEW PROJECT](#)

Project 1 PUBLIC PROJECT [Edit project](#)

16 Jan, 2022 - 21 Jan, 2022

For tutorial Sources tagged

Natural Language Processing

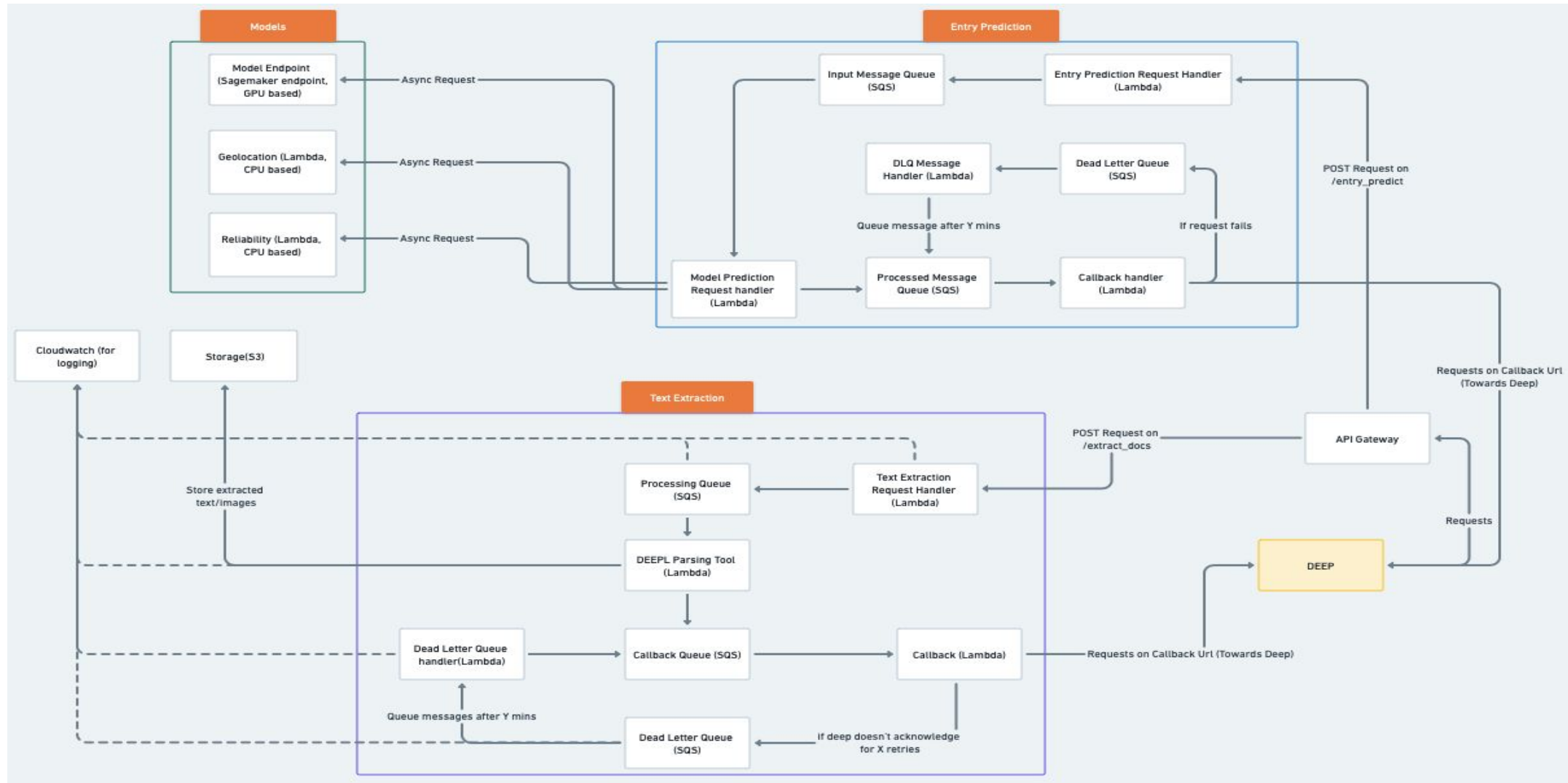


Tailored to work on common humanitarian analysis frameworks

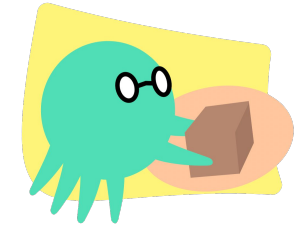
Trained on data from DEEP

Reduce tagging time to support timely analysis in crisis situations

DEEP- NLP Infrastructure

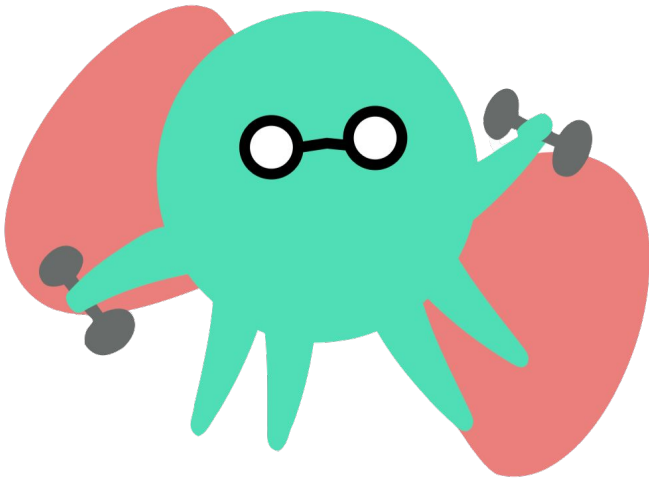


DEEP - NLP Infrastructure



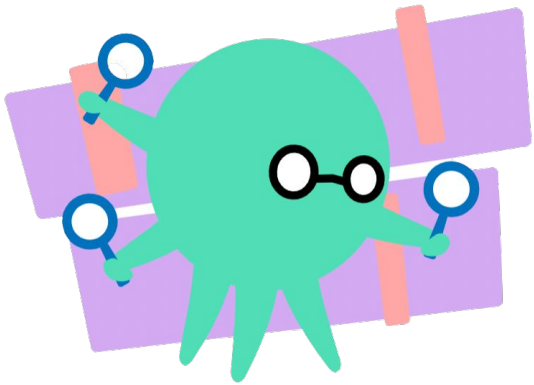
- NLP infrastructure setup in AWS is isolated from DEEP
- NLP Infrastructure consists of Model Deployment, Text Extraction and Entry Prediction
- Model Deployment: Transformer model deployed in a Sagemaker endpoint, other two as lambda functions.
- Text Extraction: Real-time extraction of texts from several different file formats (e.g. pdf, docx etc) and webpages.
- Entry Prediction: Gets the real-time Tag predictions on requested entries.
- Entry Extraction and Entry Prediction blocks consist of several SQS and Lambda functions to handle bursts of requests from DEEP.

User interface



- Recently updated version of DEEP
- Development of an interface that could handle the NLP
- Consists of:
 - Framework matching
 - Tagging interface

Framework Mapping



- Dynamic nature of frameworks
- End user tag recommendations
- Feedback collection
- Further training

Tagging Interface

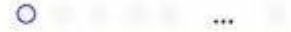


- Create entry based on mapping / recommendations
- Feedback form

10 Mar 2022

14 Mar 2022

23 Mar 2022



0%

Sources tagged & validated

RECENT PROJECTS

Select Project



SET UP A NEW PROJECT

A

PUBLIC PROJECT

 Edit project

Project owner

Aditya Khatri

Analytical Framework

Aditya's Framework

Team members

1

Recently active

Aditya Khatri 10:23 AM, Mar 23, 2022

Top Taggers

Aditya Khatri 6

Top Sourcers

Aditya Khatri 51



51

Total sources

2%

Sources tagged

6%

Sources in progress

92%

Sources not tagged

Project activity



RECENT ACTIVITY

AK

Aditya Khatri added an entry on A.

10:23 AM, Mar 23, 2022

AK

Aditya Khatri added an entry on A.

09:04 AM, Mar 22, 2022

AK

Aditya Khatri added a source on A.

11:43 AM, Mar 21, 2022

AK

Aditya Khatri added a source on A.

A



Sources

Export

Add a source



21 Mar, 2022	Nepal - March 2011	-	UNHCR Portal		20 Jul, 2020	Aditya Khatri	Aditya Khatri
21 Mar, 2022	Nepal: Administrative map - 27 April 2015	1 page	UNHCR Portal		20 Jul, 2020	Aditya Khatri	Aditya Khatri
21 Mar, 2022	Nepal: Operational Map - 26 Sep. 2014	1 page	UNHCR Portal		20 Jul, 2020	Aditya Khatri	Aditya Khatri
21 Mar, 2022	Asia - UNHCR Presence - 28 March 2017	1 page	UNHCR Portal		20 Jul, 2020	Aditya Khatri	Aditya Khatri
21 Mar, 2022	WHO Nepal COVID-19 Epi Dashboard: Epi week 08 (21 February - 27 February 2022)	35 pages	ReliefWeb >	World Health Organization	01 Mar, 2022	Aditya Khatri	Aditya Khatri
21 Mar, 2022	Situation Update #97 - Coronavirus Disease 2019 (COVID-19) WHO Country Office for Nepal Reporting Date: 14 - 20 February 2022 (EPI Week 07)	16 pages	ReliefWeb >	World Health Organization	01 Mar, 2022	Aditya Khatri	Aditya Khatri

Image Slide

