

Object Detection on Mobile using YoloV5

Jeanne Fleury

Edge AI Track, Applied Machine Learning Days 2022



Motivation

- Object detection done directly on the mobile device
 - No internet connection needed
 - The data stays on the device and is never sent to a third party
 - Fast inference time

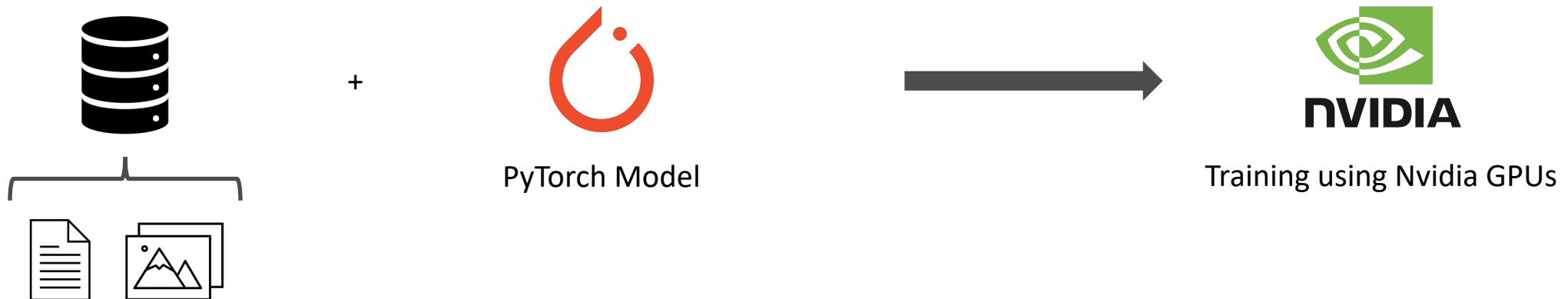
Goals

- Facilitate the deployment of a ML model on a mobile device
 - Conversion of the model into a suitable format for mobile
 - Libraries to allow for efficient inference on mobile
- Share innovation with the world on GitHub



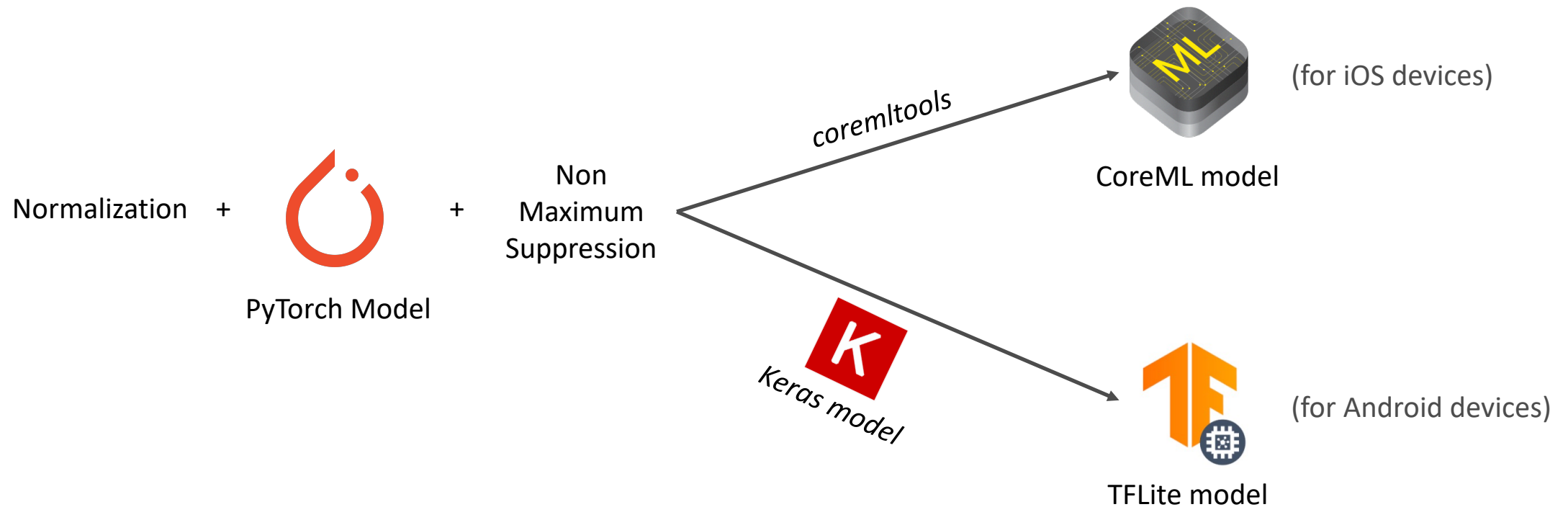
Object detection using YoloV5

- YoloV5 model (open source, good performance)
- The model is trained using PyTorch
- A large amount of annotated data (~100'000 images, 150 objects) is used
- Different model sizes are available



Conversion

- The PyTorch YoloV5 model is converted into CoreML and TFLite
- The pre- and post-processing is included in the converted model
- Quantization is used to reduce the model size (float16 or int8 quantization)



Inference

- Android
 - TFLite allows the integration of the model in the Android app.
 - Model size and input resolution is chosen based on device performance
 - The model runs either using CPU, GPU or NNAPI
- iOS
 - The Vision framework allows the integration of a CoreML model in the iOS app.
 - During inference, the CoreML engine chooses the hardware to run each layer
- Challenges
 - Performance diversity between Android devices: how to have an app running on all devices
 - The mobile device is prone to overheating if the model is used for a long time, which then increases the inference time.

SBBML

- SBBML: libraries for Android and iOS to facilitate the deployment of YoloV5 in a mobile application. These libraries include:
 - Object tracking
 - Support for NNAPI and GPU / Neural Engine (ANE)
- Open source libraries
 - SBBML for inference on mobile
 - <https://github.com/SchweizerischeBundesbahnen/sbb-ml-android>
 - <https://github.com/SchweizerischeBundesbahnen/sbb-ml-ios>
 - Models and converter
 - <https://github.com/SchweizerischeBundesbahnen/sbb-ml-models>

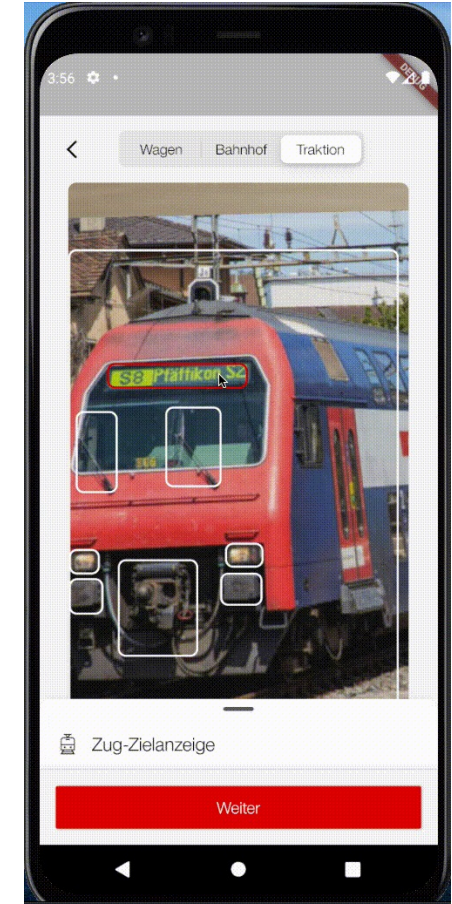
Use case for our customers: SBB Inclusive

- Blind and visually impaired people find the train doors by asking or following the people present on a platform.
- **They can now point their phone in the general direction of the train and it will vibrate when the door is in front of them**



Use cases for internal use: Repair & clean

- Employees needed to manually enter the damaged objects into a form, which was time-consuming.
- Each object has a specific name and it can be hard to find the right one.
- **They can now take a picture and the objects are automatically recognized**
- Other use cases: material number detection, damage classification and much more



Questions ?

