



Ecole polytechnique fédérale de Lausanne

- Welcome to EPFL -

Martin Vetterli, EPFL President




SwissTech Convention Center
January 28, 2019

EPFL campus

2012
Sports Center
Extension

2013
Student Housing
(Les Arcades)

2014

SwissTech
Convention
Center

2010

Rolex Learning Center

2015
Robotics, Discovery Learning Labs

2016

Artlab

2010

Extension
EPFL Innovation Park

Our three missions



Education



Research



Innovation

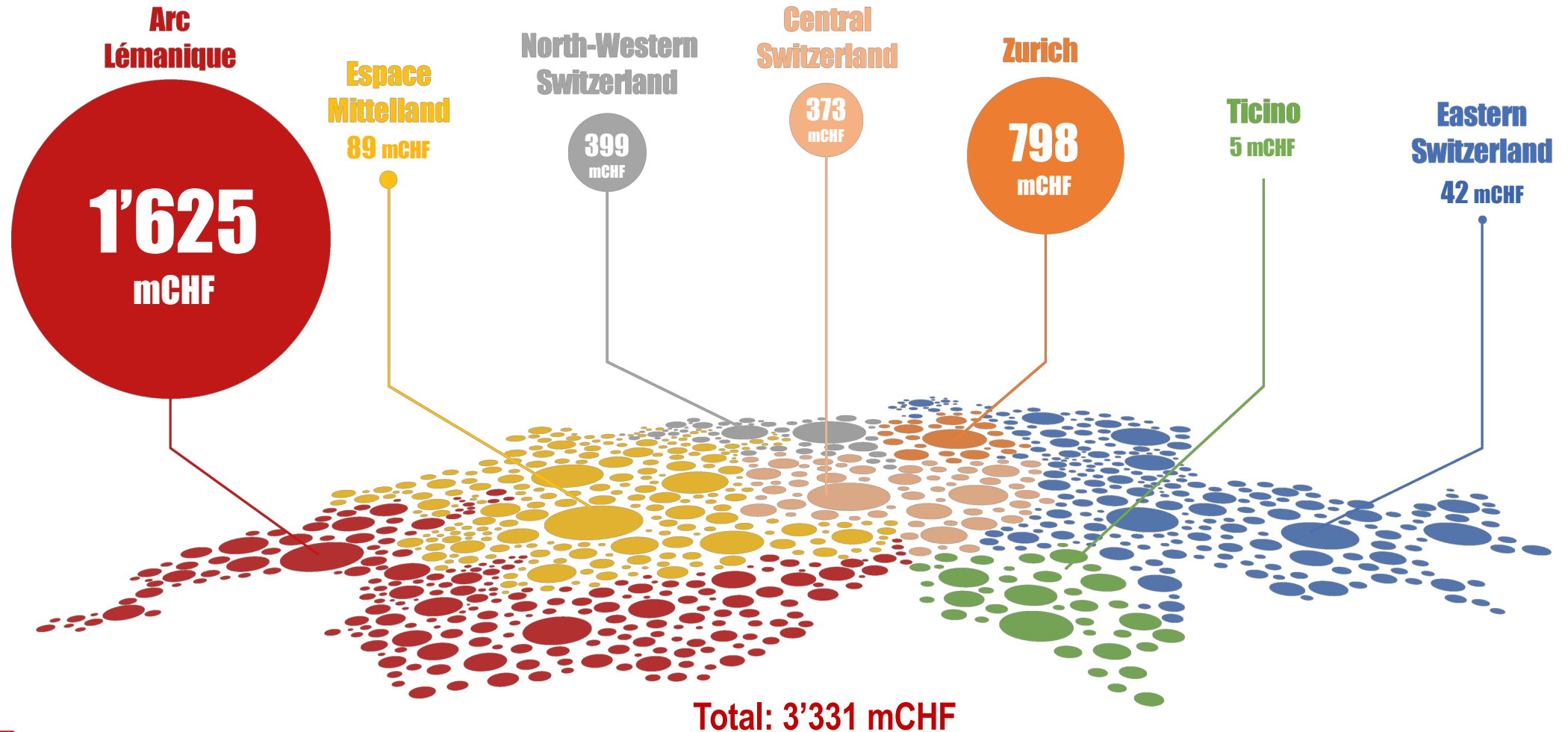
Education: Online Campus

>100 MOOCs online
>2,300,000 registrations
from >186 countries
>100,000 users completed a course

Top organisations hosting ERC Principal Investigators

Host Institution	Country	FP7 2007-2013			Horizon 2020 Calls		
		StG	CoG	AdG	StG	CoG	AdG
National Centre for Scientific Research	FR	130	15	66	84	87	28
Max Planck Society	DE	43	5	51	53	28	30
University of Cambridge	UK	59	7	56	30	34	22
University of Oxford	UK	55	11	61	22	32	19
University College London	UK	53	7	29	23	26	18
Swiss Federal Institute of Technology Lausanne	CH	44	2	37	15	17	13
Weizmann Institute	IL	43	10	28	19	19	8
Swiss Federal Institute of Technology Zurich	CH	30	3	46	18	9	19
Helmholtz Association of German Research Centres	DE	34	6	16	28	26	9
Hebrew University of Jerusalem	IL	40	3	30	19	16	7

Innovation: Venture Capital



Worldwide developments

DeepBlue (1997)



Watson (2011)



AlphaGo / AlphaGo Zero (2016/2017)



Worldwide developments



EDITORIAL

Chess, a *Drosophila* of reasoning

The recent world chess championship saw Magnus Carlsen defend his title against Fabiano Caruana. But it was not a contest between the two strongest chess players on the planet, only the strongest humans. Soon after I lost my rematch against IBM's Deep Blue in 1997, the short window of human-machine chess competition slammed shut forever. Unlike humans, machines keep getting faster, and today a smartphone chess app can be stronger than Deep Blue. But as we see with the AlphaZero system (see pages 1118 and 1140), machine

dominance has not ended the historical role of chess as a laboratory of cognition. Much as the *Drosophila melanogaster* fruit fly became a model organism for geneticists, chess became a *Drosophila* of reasoning. In the late 19th century, Alfred Binet hoped that understanding why certain people excelled at chess would unlock secrets of human thought. Sixty years later, Alan Turing wondered if a chess-playing machine might illuminate, in the words of Norbert Wiener, "whether this sort of ability represents an essential difference between the potentialities of the machine and the mind."

Much as airplanes don't flap their wings like birds, machines don't generate chess moves like humans do. Early programs that attempted it were weak. Success came with the "minimax" algorithm and Moore's law, not with the ineffable human combination of pattern recognition and visualization. This prosaic formula dismayed the artificial intelligence (AI) crowd, who realized that profound computational insights were not required to produce a machine capable of defeating the world champion.

But now the chess fruit fly is back under the microscope. Based on a generic game-playing algorithm, AlphaZero incorporates deep learning and other AI techniques like Monte Carlo tree search to play against itself to generate its own chess knowledge. Unlike top traditional programs like Stockfish and Fritz, which employ many preset evaluation functions as well as massive li-

braries of opening and endgame moves, AlphaZero starts out knowing only the rules of chess, with no embedded human strategies. In just a few hours, it plays more games against itself than have been recorded in human chess history. It teaches itself the best way to play, reevaluating such fundamental concepts as the relative values of the pieces. It quickly becomes strong enough to defeat the best chess-playing entities in the world, winning 28, drawing 72, and losing none in a victory over Stockfish.

I admit that I was pleased to see that AlphaZero had a dynamic, open style like my own. The conventional wisdom was that machines would approach perfection with endless dry maneuvering, usually leading to drawn games. But in my observation, AlphaZero prioritizes piece activity over material, preferring positions that to my eye looked risky and aggressive. Programs usually reflect priorities and prejudices of programmers, but because AlphaZero programs itself, I would say that its style reflects the truth. This superior understanding allowed it to outclass the world's top traditional program despite calculating far fewer positions per second. It's the embodiment of the cliché, "work smarter, not harder."

AlphaZero shows us that machines can be the experts, not merely expert tools. Explainability is still an issue—it's not going to put chess coaches out of business just yet. But the knowledge it generates is information we can all learn from. AlphaZero is surpassing us in a profound and useful way, a model that may be duplicated on any other task or field where virtual knowledge can be generated.

Machine learning systems aren't perfect, even at a closed system like chess. There will be cases where an AI will fail to detect exceptions to their rules. Therefore, we must work together, to combine our strengths. I know better than most people what it's like to compete against a machine. Instead of raging against them, it's better if we're all on the same side.

—Garry Kasparov



Garry Kasparov is the former world chess champion and the author of *Deep Thinking: Where Machine Intelligence Ends and Human Creativity Begins*. He is chairman of the Human Rights Foundation, New York, NY, USA. kasparov@hrf.org



"...machine dominance has not ended the historical role of chess as a laboratory of cognition."

CREDITS: IMAGE: ELLERRE/ART; TECHNOLOGIES: LIMITED; SHOOTING: SUPER PHOTOGRAPHY

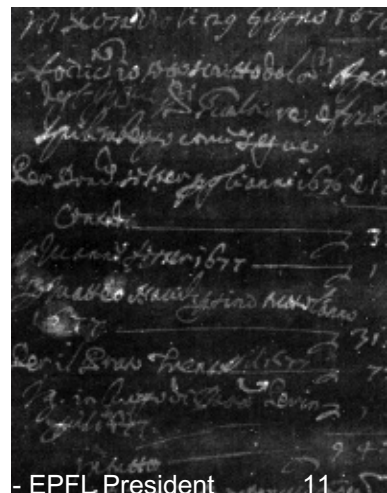
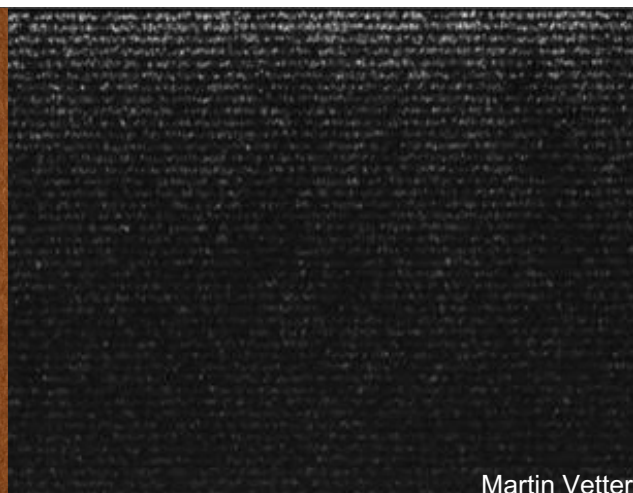
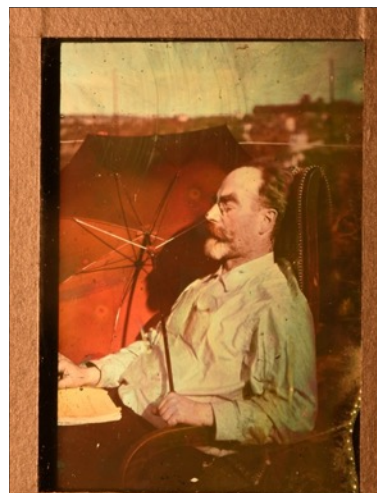
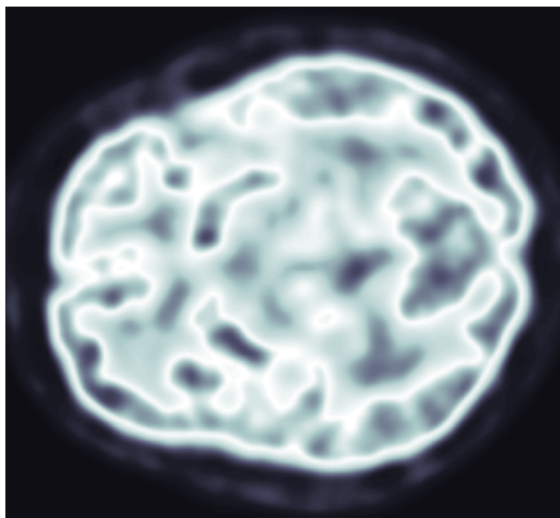
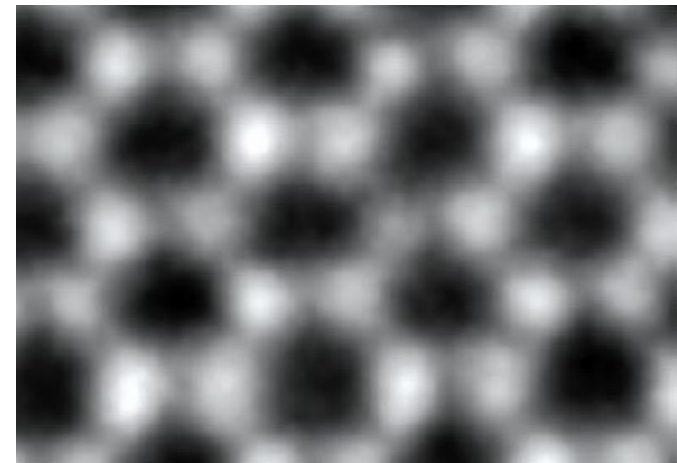
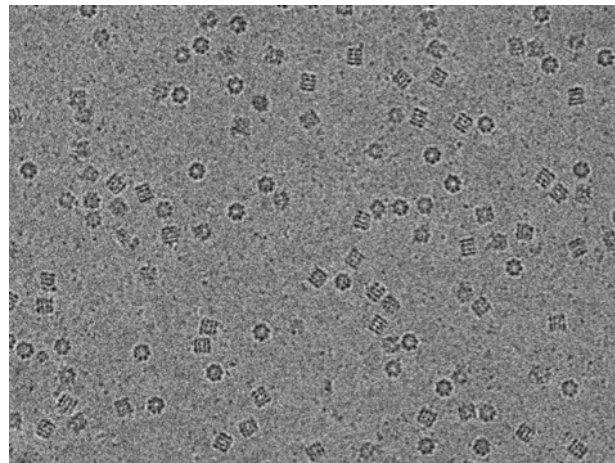
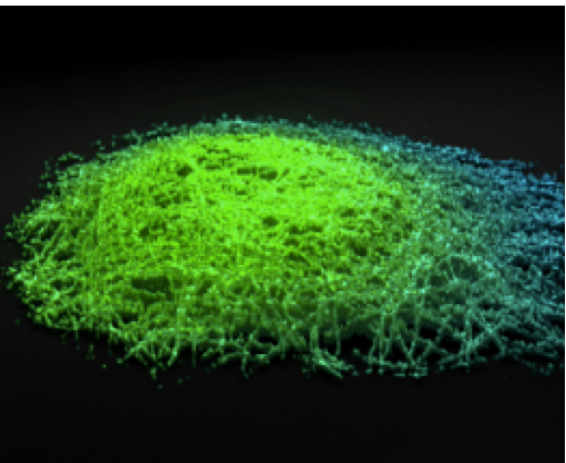
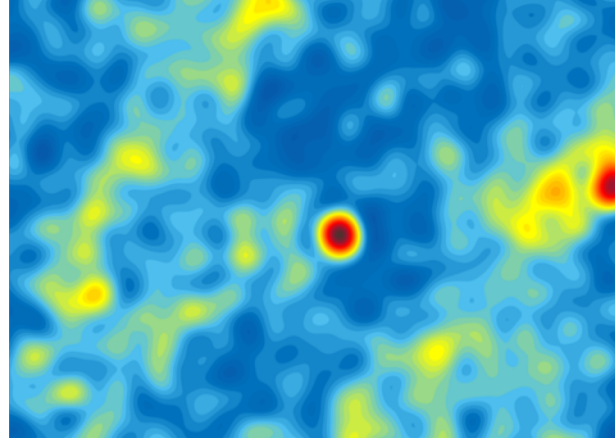
Challenge: access to data



Data for intelligent systems



Imaging data



Ultimately, we work for **society**...



TechWars

FAANG/GAFAA:

Facebook, Amazon, Apple,
Netflix, Google/Alphabet

BAT:

Baidu, Alibaba, Tencent



AI for Good

- Collaborate with **international organizations** (ie. CICR, Terre des Hommes, ITU, WHO, etc)
- **Synergize** on expertises of EPFL and of international organizations
- Establish local connections and use proximity to Geneva



50th Anniversary in 2019

Education: 17 May 2019

Research: 11-14 September 2019

Open Doors Campus Lausanne:
14 & 15 September 2019

Open science day: 18 October 2019

Industry day: 19 November 2019

Investor day: 19-20 November 2019

celebration.epfl.ch

50 years

