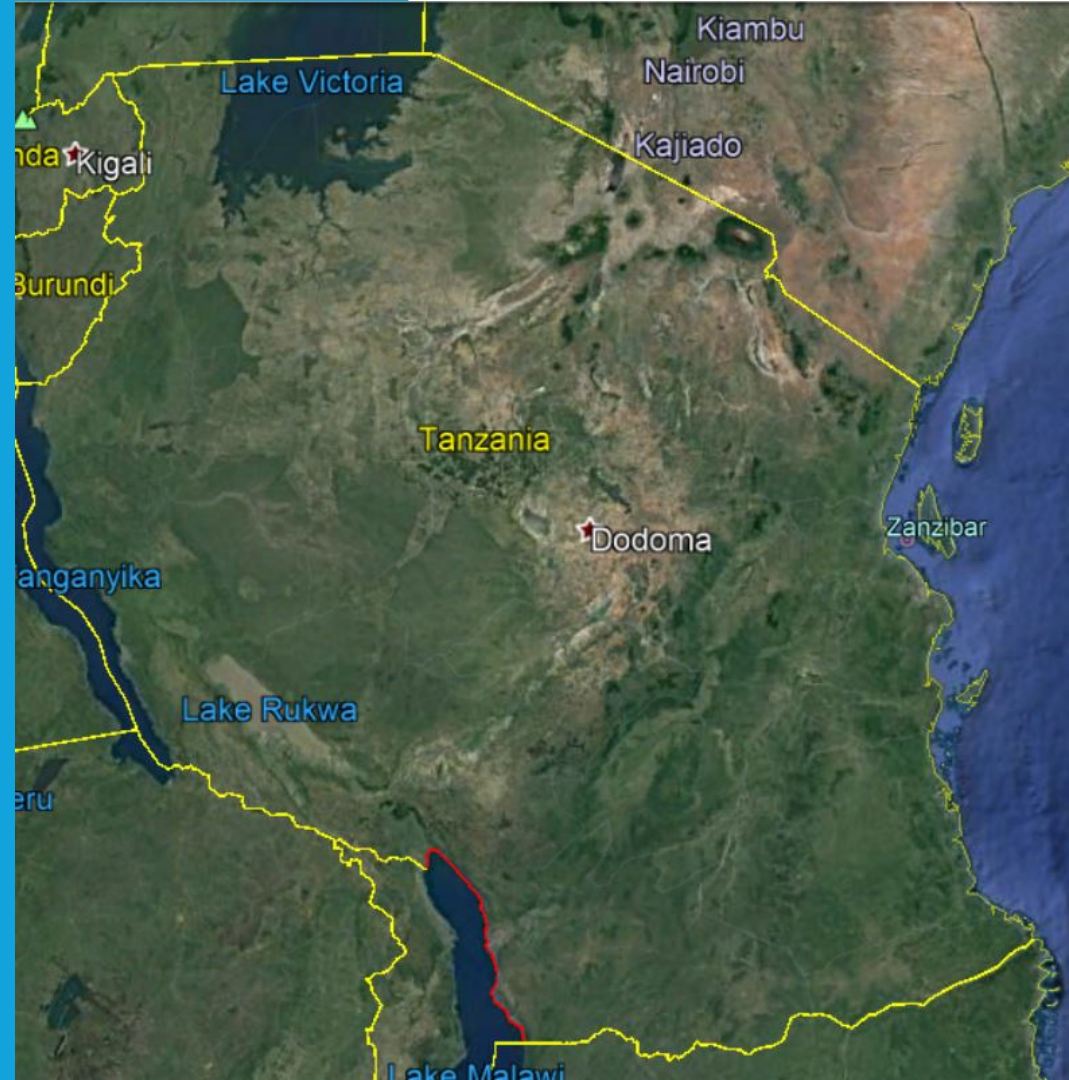


AI & CITY

TRENDS OF MACHINE
LEARNING IN
ZANZIBAR, TANZANIA
SUBSEQUENTLY
ZANZIBAR MAPPING
INITIATIVE

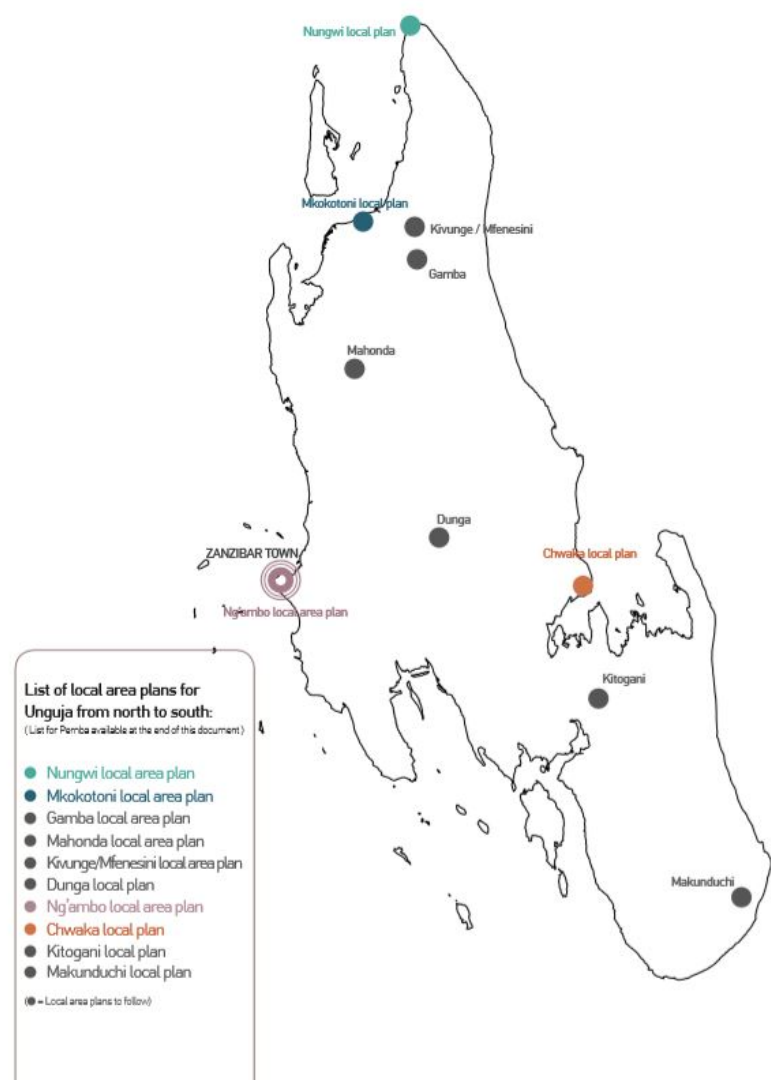
ZANZIBAR, TANZANIA



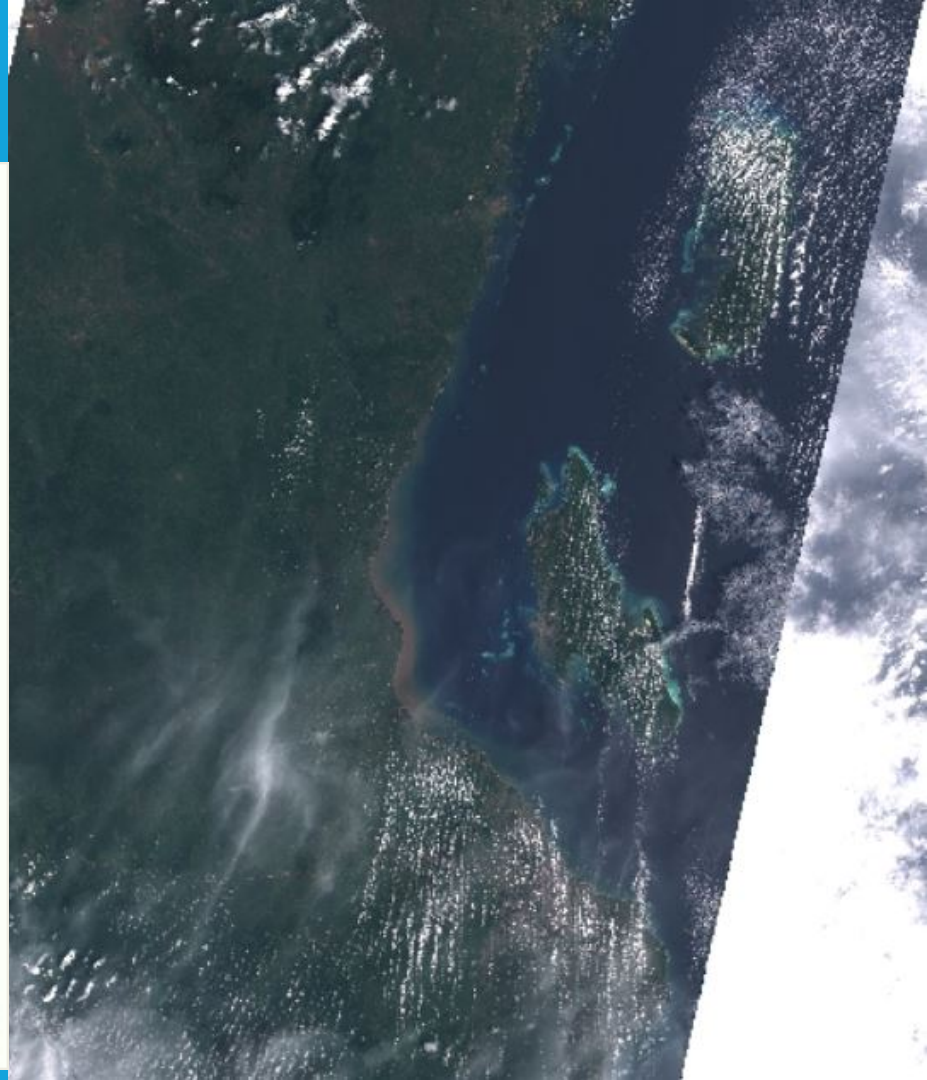
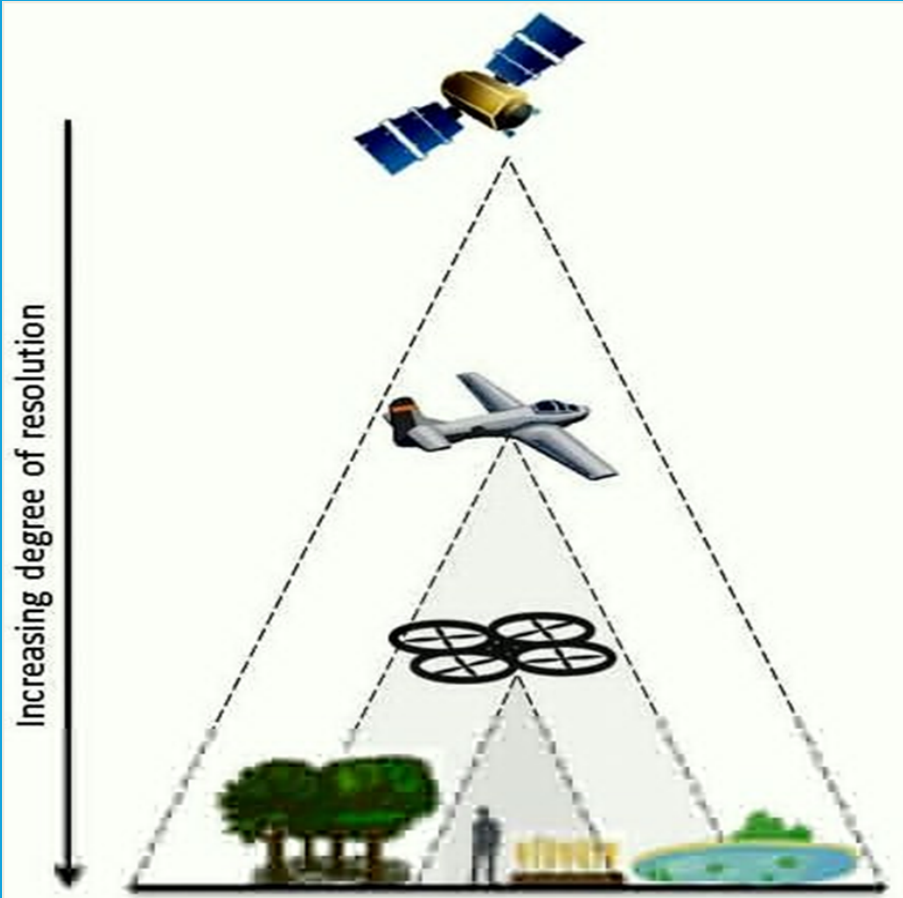
UNGUJA ISLAND - ZANZIBAR

- Local Area Plans were initiated.
- Leads an establishment of new Towns.
- Re Plan the existing Town
(Resilience & smart)

Data?

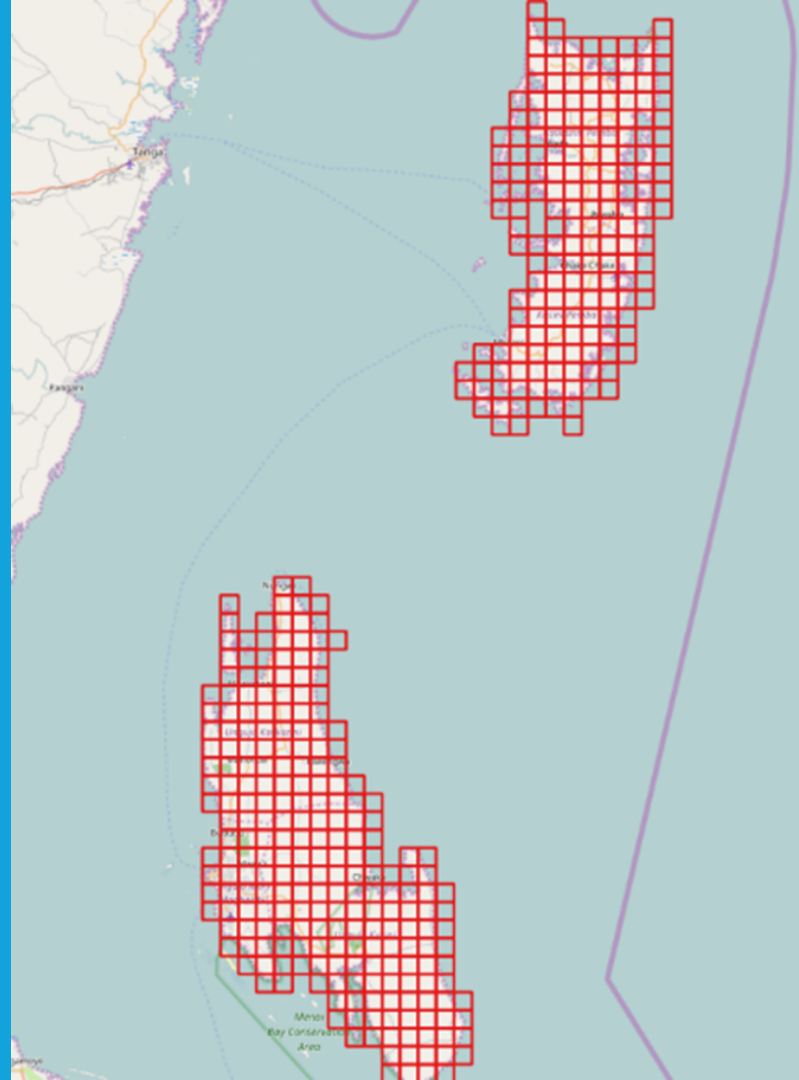


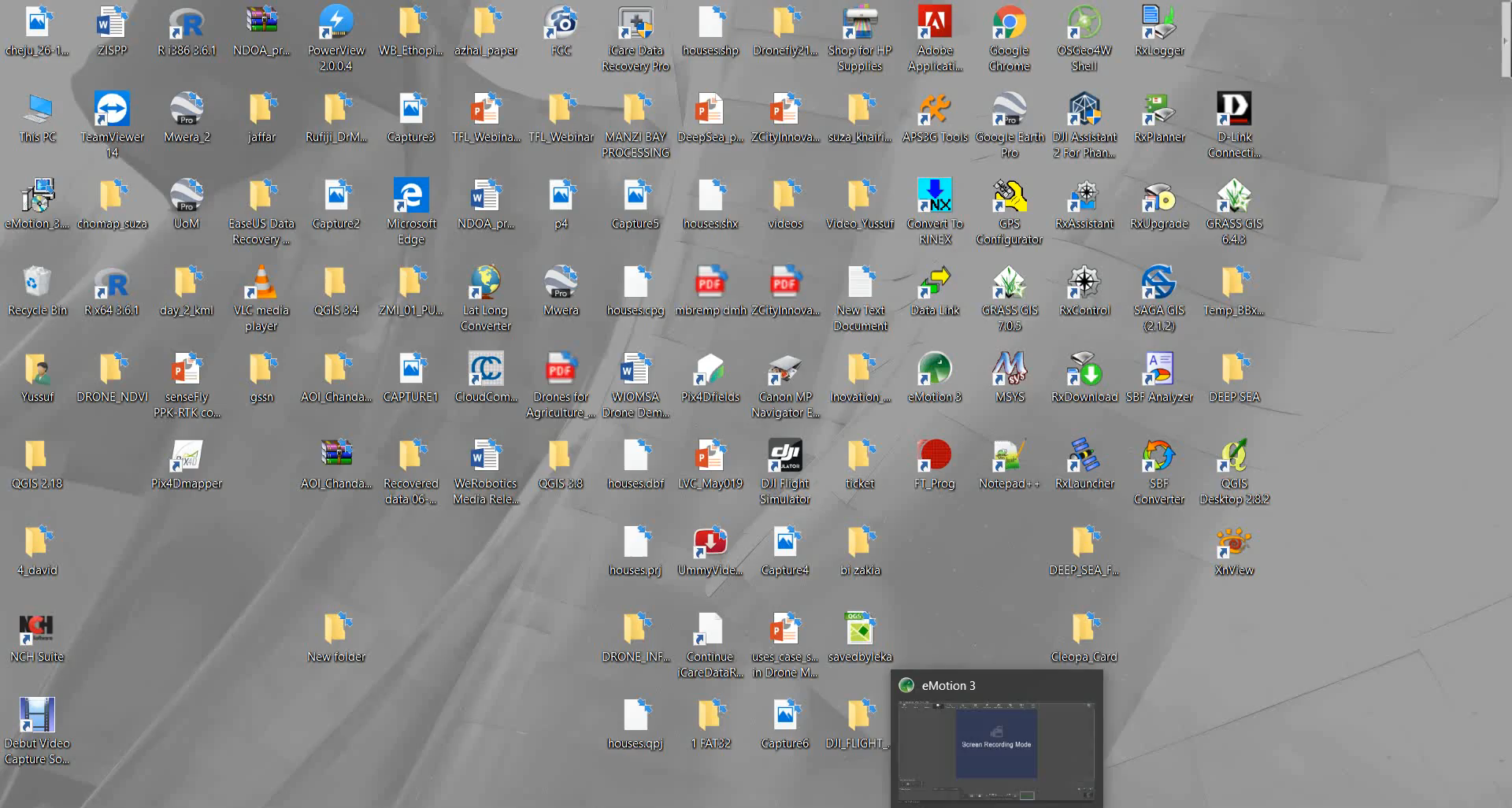
POSSIBLE DATA SOURCES



ZANZIBAR MAPPING INITIATIVES

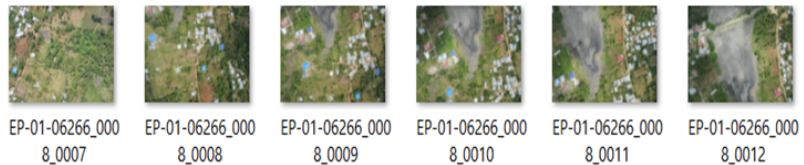
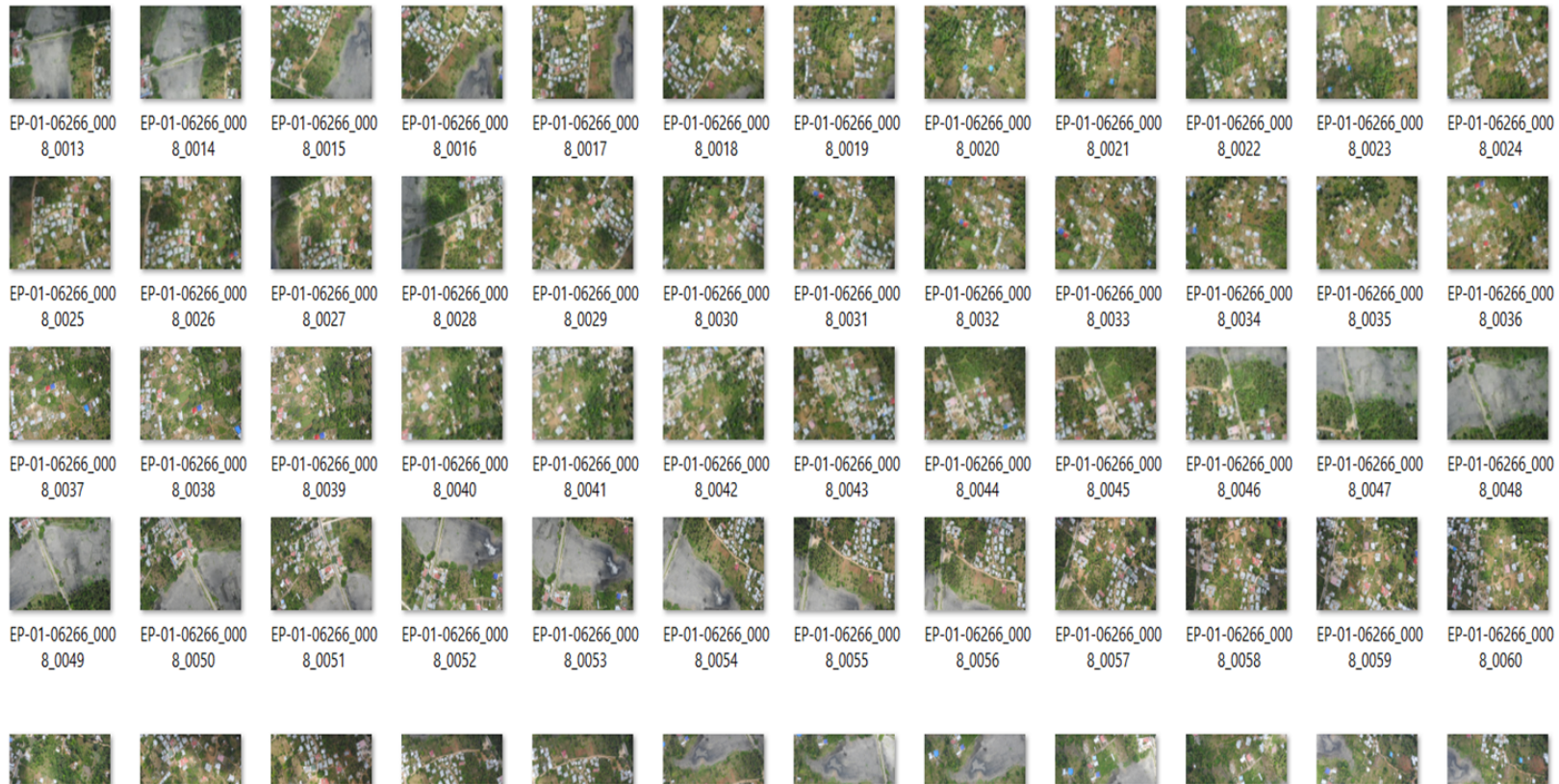
- Objective: To update the base map of Zanzibar.
- 2 islands 2500 km²: UNGUJA and PEMBA
- Zoning system = 9 km² zone/block
- 239 zones in UNGUJA
- 182 zones in PEMBA
- At 7 cm resolution (Ground Sampling Distance – GSD)

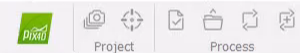




- cheju_26-1...
- ZISPP
- R1386 3.6.1
- NDOA_pr...
- PowerView 2.0.0.4
- WB_Ethopi...
- azhal_pape...
- RCC
- iCare Data Recovery Pro
- houseshsp
- Dronefly21...
- Shop for HP Supplies
- Adobe Applicati...
- Google Chrome
- OSGeo4W Shell
- RxLogger
- This PC
- TeamViewer 14
- Mwera_2
- jaffar
- Rufiji_DrM...
- Capture3
- TFL_Webina...
- TFL_Webinar
- MANZI BAY PROCESSING
- DeepSea_p...
- ZCityInnova...
- suza_khairi...
- APS3G Tools
- Google Earth Pro
- DJI Assistant 2 For Phan...
- RxPlanner
- D-Link Connecti...
- eMotion_3...
- chomap_suza
- UoM
- EaseUS Data Recovery ...
- Capture2
- Microsoft Edge
- NDOA_pr...
- p4
- Capture5
- housesshx
- videos
- Video_Yussufi
- Convert To RINEX
- GPS Configurator
- RxAssistant
- RxUpgrade
- GRASS GIS 6.4.3
- Recycle Bin
- Rx64 3.6.1
- day_2_kml
- VLC media player
- QGIS 3.4
- ZMI_01_PU...
- Lat Long Converter
- Mwera
- houses.cpg
- mbrempp dmh
- ZCityInnova...
- New Text Document
- Data Link
- GRASS GIS 7.0.5
- RxControl
- SAGA GIS (2.1.2)
- Temp_BBx...
- Yussuf
- DRONE_NDVI
- senseFly PPK-RTK co...
- gssn
- AOI_Chanda...
- CAPTURE1
- CloudCom...
- Drones for Agriculture...
- WJOMSA Drone Dem...
- Pix4Dfields
- Canon MP Navigator E...
- Inovation_...
- eMotion 3
- MSYS
- RxDownload
- SBF Analyzer
- DEEP SEA
- QGIS 2.18
- Pix4Dmapper
- AOI_Chanda...
- Recovered data 06...
- WeRobotics Media Rele...
- QGIS 3.8
- houses.dbf
- LVC_May019
- DJI Flight Simulator
- ticket
- FT_Prog
- Notepad++
- Rxlauncher
- SBF Converter
- QGIS Desktop 2.8.2
- 4_david
- houses.prj
- UummyVide...
- Capture4
- bj zakia
- DEEP_SEA_F...
- XnView
- NCH Suite
- New folder
- DRONE_INF...
- Continue iCareDataR...
- uses_ease_s... in Drone M...
- savedbyleka
- Cleopa_Card
- houses.qpj
- 1 FAT32
- Capture6
- DJI_FLIGHT...

What we get from the Field





- Home
- Map View
- rayCloud
- Volumes
- Mosaic Editor
- Index Calculator



Projects Help Demo Project

New Project...
Follow the wizard to create a new project with your own dataset.

Open Project...
Open an existing project.

- | | |
|---|--|
| <p>masaleng.p4d
793 images
<i>Last modified: Sat Nov 23 2019</i></p> | <p>aoi_3.p4d
817 images
<i>Last modified: Fri Nov 22 2019</i></p> |
| <p>aoi_1.p4d
356 images
<i>Last modified: Fri Nov 22 2019</i></p> | <p>mokhtolong_practice1.p4d
10 images
<i>Last modified: Tue Nov 19 2019</i></p> |

News

New Pix4D Community
Ready to join? Introduce yourself

Tips

Did you know...
How to include GCPs in the project

- Processing
- Log Output
- Processing Options

Some Generated Product



Applications

- Urban planning
 - Features digitization: buildings, roads (on going)
 - Updating existing Topographic map.
- Disaster Risk Reduction
 - Flood modelling
 - Sea level rise scenarii.
 - Storm surge
- Open Street Map improvements
- Coastal Zone Management
 - Sensitivity
 - Seaweed farming
- Health
 - Cholera mapping
 - Malaria Elimination
- Business cases
 - EIA Environment Impact Assessment
 - SEA (Strategic Environment Assessment)
 - New Housing Developments Engineering/Monitoring



CAN MACHINE LEARNING WORKS ON THIS DATA?

Characterization

Identification

Detection



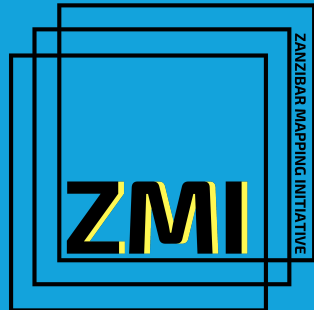


The world's largest aerial mapping exercise using consumer drones

Zanzibar Mapping Initiative

TZ / AI CHALLENGE

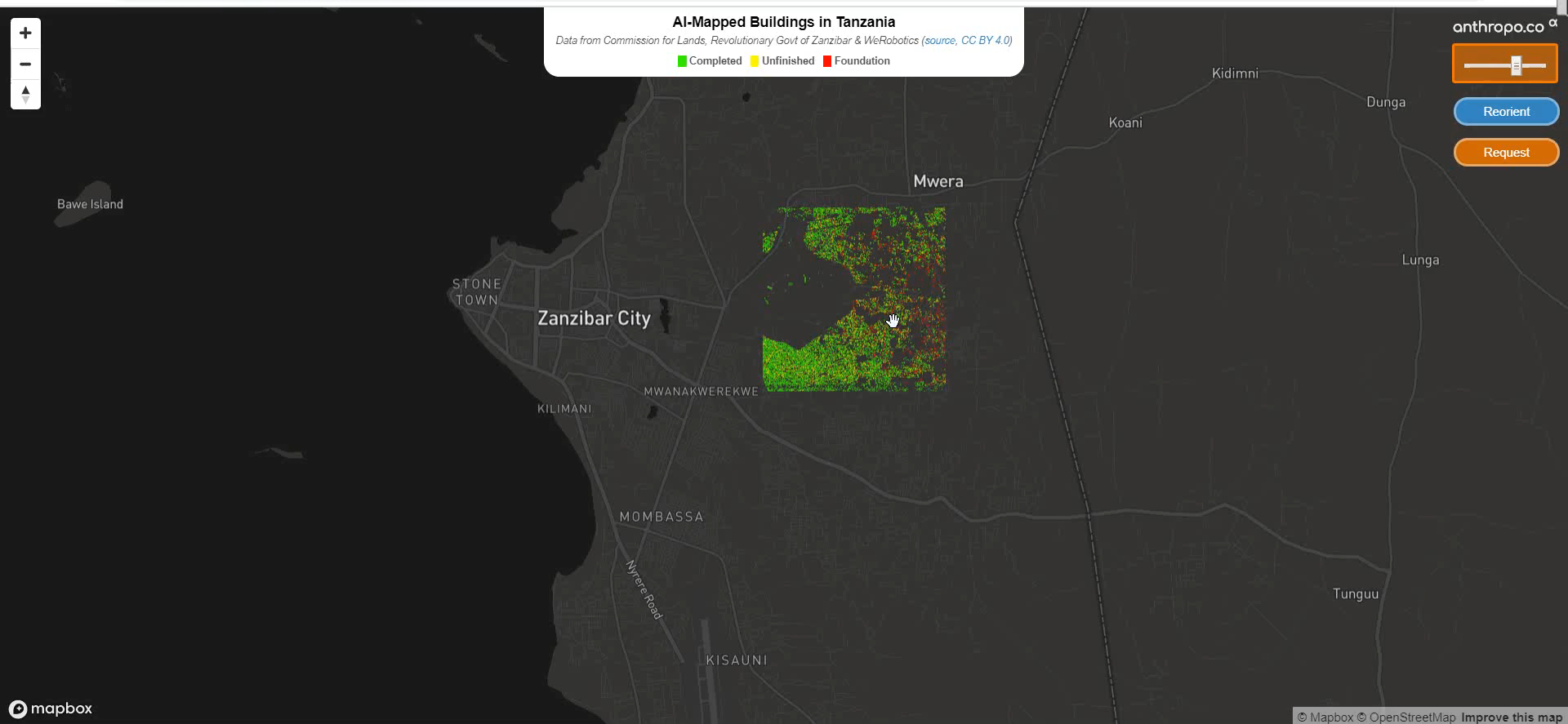
Partners



We
Robotics



THE WORLD BANK



anthropo.co

Reorient

Request

Number of Detected Objects: 6805

Did not manage to get what you wanted?
Learn about some common mistakes made while building a custom detector [here](#)




Accuracy >

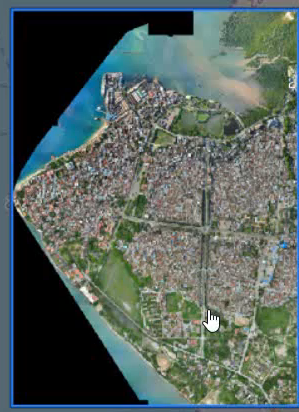
Improve Detector

Results Display

Shapes Centers

Images for training

-  u_117_v1.jp2  



Next objectives

- Familiarizing on AI tools (Development)
- Allow Community to participate on their area plans.



ASANTE SANA

Merci beaucoup

Vielen dank

Thank you

خیلی ممنون

